

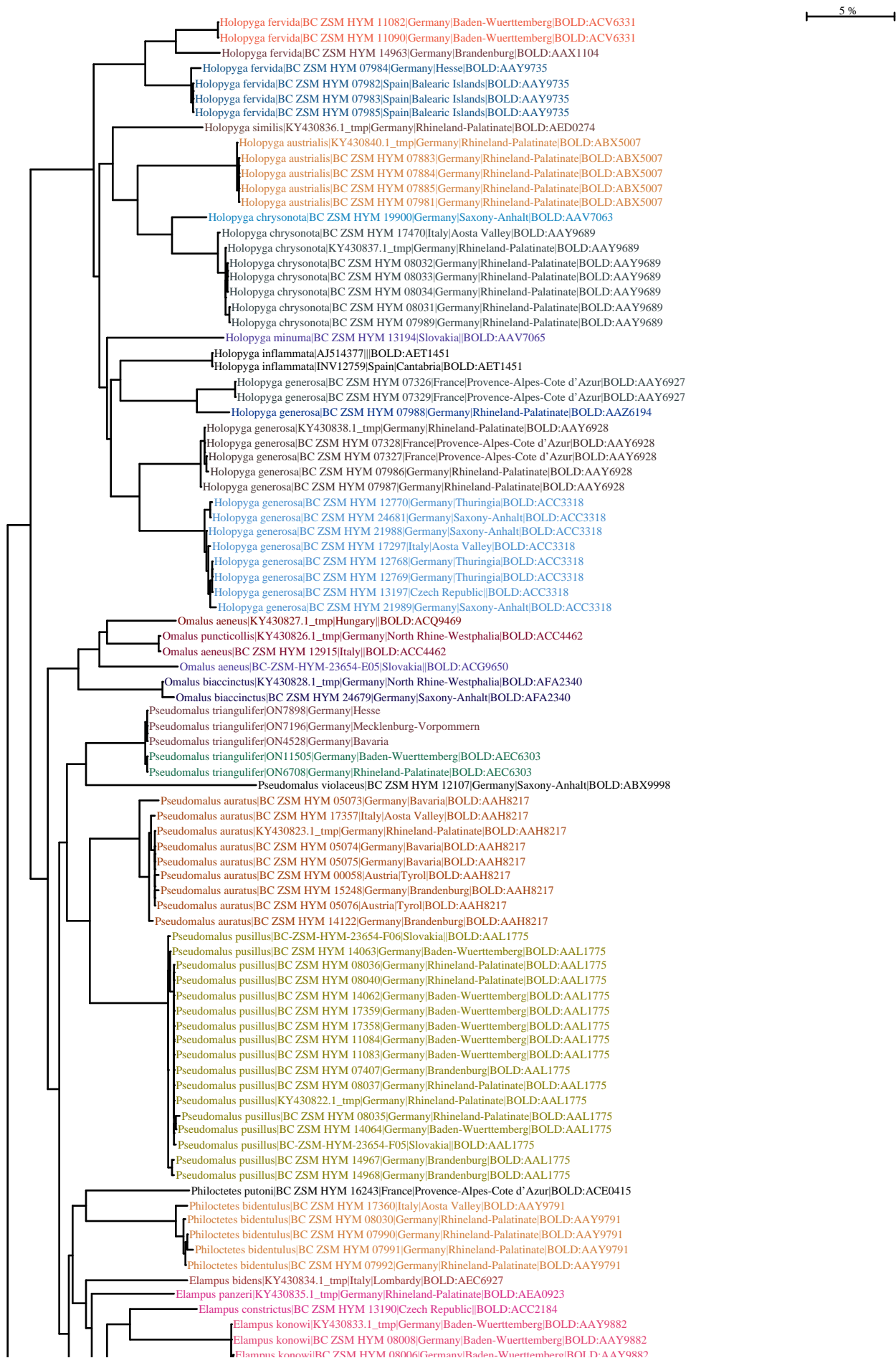
BOLD TaxonID Tree

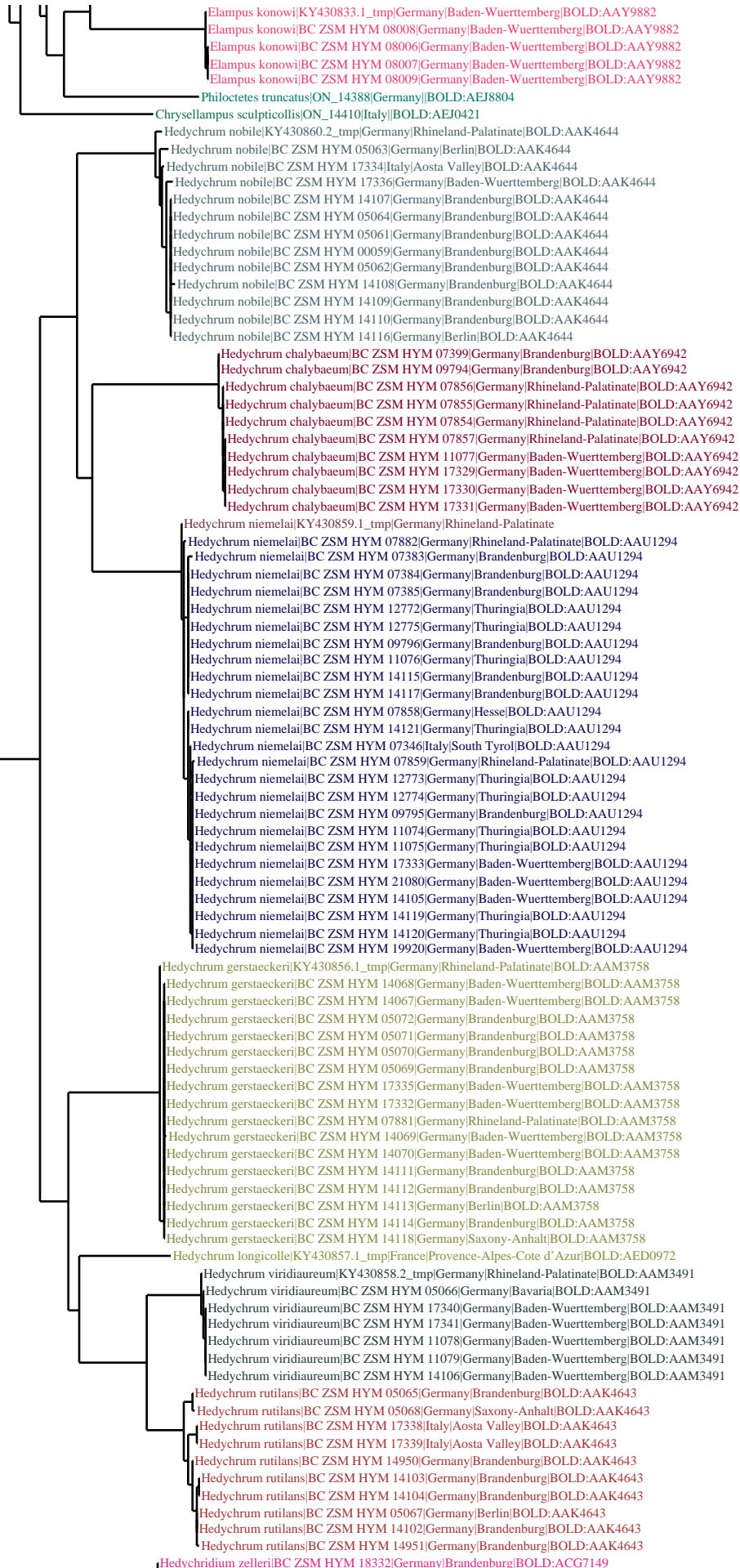
Title : Tree Result - DS-CHRYSEUR
Date : 31-Aug-2024
Data Type : Nucleotide
Distance Model : Kimura 2 Parameter
Marker : COI-5P
Colourization : Barcode Cluster (BIN)

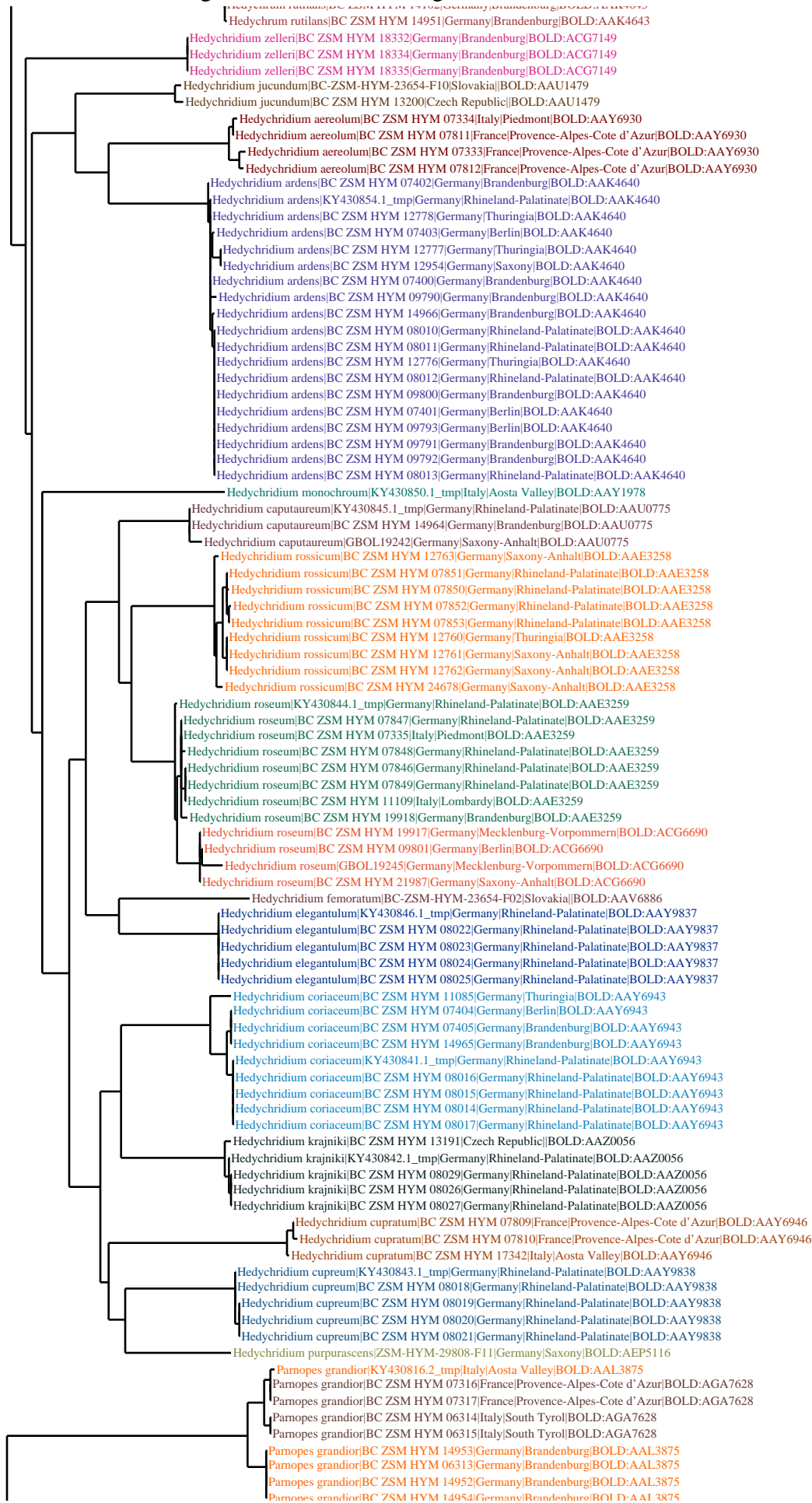
Label : Sample ID
Label : Taxon
Label : Country
Label : Province/State
Label : Barcode Cluster (BIN)

Sequence Count : 804
Species count : 113
Genus count : 19
Family count : 1
Unidentified : 0

BIN Count : 125







Parnopes grandior|BC ZSM HYM 06313|Germany|Brandenburg|BOLD: AAL3875
Parnopes grandior|BC ZSM HYM 14952|Germany|Brandenburg|BOLD: AAL3875
Parnopes grandior|BC ZSM HYM 14954|Germany|Brandenburg|BOLD: AAL3875
Cleptes striatipleuris|KY430863.1_tmp|Germany|Rhineland-Palatinate|BOLD: AAU2238
Cleptes semiauratus|KY430862.1_tmp|Germany|Rhineland-Palatinate|BOLD: AAJ3895
Cleptes semiauratus|BC ZSM HYM 05079|Germany|Bavaria|BOLD: AAJ3895
Cleptes semiauratus|BC ZSM HYM 05080|Germany|Bavaria|BOLD: AAJ3895
Cleptes semiauratus|BC ZSM HYM 20587|Germany|Baden-Wuerttemberg|BOLD: AAM4041
Cleptes semiauratus|BC ZSM HYM 05077|Germany|Bavaria|BOLD: AAM4041
Cleptes semiauratus|BC ZSM HYM 05078|Germany|Bavaria|BOLD: AAM4041
Cleptes semiauratus|BC ZSM HYM 14123|Germany|Bavaria|BOLD: AAM4041
Cleptes splendidus|KY430861.1_tmp|Germany|Rhineland-Palatinate|BOLD: AAR9529
Cleptes splendidus|BC ZSM HYM 08004|Germany|Rhineland-Palatinate|BOLD: AAR9529
Cleptes nitidulus|BC ZSM HYM 08002|Germany|Rhineland-Palatinate|BOLD: AAZ1160
Cleptes nitidulus|BC ZSM HYM 24684|Germany|Saxony-Anhalt|BOLD: AAZ1160
Cleptes nitidulus|BC ZSM HYM 24683|Germany|Saxony-Anhalt|BOLD: AAZ1160
Cleptes nitidulus|BC ZSM HYM 24682|Germany|Saxony-Anhalt|BOLD: AAZ1160
Cleptes nitidulus|BC ZSM HYM 08003|Germany|Rhineland-Palatinate|BOLD: AAZ1160
Cleptes nitidulus|BC ZSM HYM 08005|Germany|Rhineland-Palatinate|BOLD: AAZ1160
Chrysis solida|BC-ZSM-HYM-29771-E02|Germany|Brandenburg|BOLD: AAY6949
Chrysis solida|BC-ZSM-HYM-29774-E09|Germany|Berlin|BOLD: AAY6949
Chrysis solida|ON7665|Italy|Emilia-Romagna|BOLD: AAY6949
Chrysis solida|ON7536|Italy|Aosta Valley|BOLD: AAY6949
Chrysis solida|ON4803|Germany|Brandenburg|BOLD: AAY6949
Chrysis solida|ON7667|Italy|Aosta Valley|BOLD: AAY6949
Chrysis solida|ON7669|Italy|Aosta Valley|BOLD: AAY6949
Chrysis solida|ON9120|Germany|Baden-Wuerttemberg|BOLD: AAY6949
Chrysis solida|KY430766.1_tmp|Germany|Schleswig-Holstein|BOLD: AAY6949
Chrysis solida|ON7197|Germany|Mecklenburg-Vorpommern|BOLD: AAY6949
Chrysis solida|ON7189|Germany|Mecklenburg-Vorpommern|BOLD: AAY6949
Chrysis solida|BC-ZSM-HYM-29774-H07|Germany|Saxony|BOLD: AAY6949
Chrysis solida|BC-ZSM-HYM-29771-D11|Germany|Thuringia|BOLD: AAY6949
Chrysis solida|ON7664|Italy|Emilia-Romagna|BOLD: AAY6949
Chrysis solida|ON7535|Italy|Aosta Valley|BOLD: AAY6949
Chrysis solida|BC-ZSM-HYM-29774-E10|Germany||BOLD: AAY6949
Chrysis solida|BC-ZSM-HYM-29774-H06|Germany|Saxony|BOLD: AAY6949
Chrysis solida|ON9764|Germany|Baden-Wuerttemberg|BOLD: AAY6949
Chrysis solida|ON7775|Germany|Bavaria|BOLD: AAY6949
Chrysis solida|ON0112|Germany|Rhineland-Palatinate|BOLD: AAY6949
Chrysis solida|ON5248|Sweden|Skane|BOLD: AAY6949
Chrysis solida|BC ZSM HYM 12754|Germany|Thuringia|BOLD: AAY6949
Chrysis solida|BC ZSM HYM 12753|Germany|Thuringia|BOLD: AAY6949
Chrysis solida|BC ZSM HYM 12752|Germany|Thuringia|BOLD: AAY6949
Chrysis solida|BC-ZSM-HYM-29774-G07|Germany||BOLD: AAY6949
Chrysis solida|BC-ZSM-HYM-29771-D10|Germany|Thuringia|BOLD: AAY6949
Chrysis mediata|ON5538|Germany|Bavaria|BOLD: AAY6949
Chrysis mediata|ON0748|Germany|Rhineland-Palatinate|BOLD: AAY6949
Chrysis mediata|BC-ZSM-HYM-29774-H09|Germany||BOLD: AAY6949
Chrysis mediata|BC-ZSM-HYM-29774-G10|Germany||BOLD: AAY6949
Chrysis mediata|BC ZSM HYM 12154|Germany|Saxony-Anhalt|BOLD: AAY6949
Chrysis mediata|ON2244|Germany|Baden-Wuerttemberg|BOLD: AAY6949
Chrysis mediata|ON4629|Germany|Baden-Wuerttemberg|BOLD: AAY6949
Chrysis mediata|ON0605|Germany|Rhineland-Palatinate|BOLD: AAY6949
Chrysis mediata|ON0122|Germany|Rhineland-Palatinate|BOLD: AAY6949
Chrysis mediata|BC ZSM HYM 07862|Germany|Rhineland-Palatinate|BOLD: AAY6949
Chrysis mediata|BC ZSM HYM 07863|Germany|Rhineland-Palatinate|BOLD: AAY6949
Chrysis mediata|BC ZSM HYM 07864|Germany|Rhineland-Palatinate|BOLD: AAY6949
Chrysis mediata|BC ZSM HYM 07865|Germany|Rhineland-Palatinate|BOLD: AAY6949
Chrysis mediata|ON1867|Germany|Baden-Wuerttemberg|BOLD: AAY6949
Chrysis mediata|ON0463|Germany|Rhineland-Palatinate|BOLD: AAY6949
Chrysis mediata|ON6150|Germany|Hesse|BOLD: AAY6949
Chrysis mediata|ON7924|Germany|Baden-Wuerttemberg|BOLD: AAY6949
Chrysis mediata|ON1489|Germany|Rhineland-Palatinate|BOLD: AAY6949
Chrysis mediata|KY430767.1_tmp|Italy|Aosta Valley|BOLD: AAY6949
Chrysis schencki|ON9719|Germany|Baden-Wuerttemberg|BOLD: ACF6219
Chrysis schencki|ON11515|Germany|Baden-Wuerttemberg|BOLD: ACF6219
Chrysis schencki|ON11496|Germany|Baden-Wuerttemberg|BOLD: ACF6219
Chrysis schencki|ON11110|Germany|Baden-Wuerttemberg|BOLD: ACF6219
Chrysis schencki|ON11085|Germany|Baden-Wuerttemberg|BOLD: ACF6219
Chrysis schencki|ON11079|Germany|Baden-Wuerttemberg|BOLD: ACF6219
Chrysis schencki|ON11413|Germany|Baden-Wuerttemberg|BOLD: ACF6219
Chrysis schencki|ON9713|Germany|Baden-Wuerttemberg|BOLD: ACF6219
Chrysis schencki|ON9712|Germany|Baden-Wuerttemberg|BOLD: ACF6219
Chrysis schencki|ON9738|Germany|Baden-Wuerttemberg|BOLD: ACF6219
Chrysis schencki|ON9789|Germany|Baden-Wuerttemberg|BOLD: ACF6219
Chrysis schencki|ON11395|Germany|Baden-Wuerttemberg|BOLD: ACF6219
Chrysis schencki|ON11201|Germany|Baden-Wuerttemberg|BOLD: ACF6219
Chrysis schencki|ON11492|Germany|Baden-Wuerttemberg|BOLD: ACF6219
Chrysis schencki|ON11491|Germany|Baden-Wuerttemberg|BOLD: ACF6219
Chrysis schencki|ON11490|Germany|Baden-Wuerttemberg|BOLD: ACF6219
Chrysis schencki|ON11489|Germany|Baden-Wuerttemberg|BOLD: ACF6219
Chrysis schencki|ON11488|Germany|Baden-Wuerttemberg|BOLD: ACF6219
Chrysis schencki|ON11535|Germany|Baden-Wuerttemberg|BOLD: ACF6219
Chrysis schencki|ON9711|Germany|Baden-Wuerttemberg|BOLD: ACF6219
Chrysis schencki|ON11531|Germany|Baden-Wuerttemberg|BOLD: ACF6219
Chrysis schencki|ON11523|Germany|Baden-Wuerttemberg|BOLD: ACF6219
Chrysis schencki|ON11516|Germany|Baden-Wuerttemberg|BOLD: ACF6219
Chrysis schencki|ON11469|Germany|Baden-Wuerttemberg|BOLD: ACF6219
Chrysis schencki|ON11078|Germany|Baden-Wuerttemberg|BOLD: ACF6219
Chrysis schencki|BC-ZSM-HYM-29774-G05|Germany||BOLD: ACF6219
Chrysis schencki|BC-ZSM-HYM-29774-F03|Germany||BOLD: ACF6219
Chrysis schencki|BC-ZSM-HYM-29774-E12|Germany|Berlin|BOLD: ACF6219

Chrysis schencki|BC-ZSM-HYM-29774-F03|Germany|BOLD:ACF6219
Chrysis schencki|BC-ZSM-HYM-29774-E12|Germany|Berlin|BOLD:ACF6219
Chrysis schencki|BC-ZSM-HYM-29774-F01|Germany|Berlin|BOLD:ACF6219
Chrysis schencki|BC-ZSM-HYM-29774-H11|Germany|BOLD:ACF6219
Chrysis schencki|KY430764.1_tmp|Sweden|Kalmar|BOLD:ACF6219
Chrysis schencki|BC ZSM HYM 12759|Germany|Thuringia|BOLD:ACF6219
Chrysis schencki|ON9717|Germany|Baden-Wuerttemberg|BOLD:ACF6219
Chrysis schencki|ON9737|Germany|Baden-Wuerttemberg|BOLD:ACF6219
Chrysis schencki|BC-ZSM-HYM-29774-E11|Germany|Berlin|BOLD:ACF6219
Chrysis schencki|BC-ZSM-HYM-29771-H11|Germany|Brandenburg|BOLD:ACF6219
Chrysis schencki|ON11387|Germany|Baden-Wuerttemberg|BOLD:ABU6375
Chrysis schencki|ON11502|Germany|Baden-Wuerttemberg|BOLD:ABU6375
Chrysis schencki|ON9715|Germany|Baden-Wuerttemberg|BOLD:ABU6375
Chrysis schencki|ON9725|Germany|Baden-Wuerttemberg|BOLD:ABU6375
Chrysis schencki|ON11472|Germany|Baden-Wuerttemberg|BOLD:ABU6375
Chrysis schencki|ON9718|Germany|Baden-Wuerttemberg|BOLD:ABU6375
Chrysis schencki|ON10498|Germany|Baden-Wuerttemberg|BOLD:ABU6375
Chrysis schencki|ON11112|Germany|Baden-Wuerttemberg|BOLD:ABU6375
Chrysis schencki|BC-ZSM-HYM-29774-G04|Germany|Saxony|BOLD:ABU6375
Chrysis parietis|ON3462|Hungary|Gyor-Moson-Sopron|BOLD:AAU2329
Chrysis parietis|ON3468|Germany|Baden-Wuerttemberg
Chrysis parietis|ON3469|Germany|Baden-Wuerttemberg|BOLD:AAU2329
Chrysis parietis|ON7396|Germany|Baden-Wuerttemberg|BOLD:AAU2329
Chrysis parietis|ON1473|Germany|Rhineland-Palatinate|BOLD:AAU2329
Chrysis parietis|BC-ZSM-HYM-29771-E03|Germany|Brandenburg|BOLD:AAU2329
Chrysis parietis|ON_14624|Germany|Baden-Wuerttemberg|BOLD:AAU2329
Chrysis parietis|BC ZSM HYM 08000|Germany|Rhineland-Palatinate|BOLD:AAU2329
Chrysis parietis|BC-ZSM-HYM-29774-H01|Germany|Saxony|BOLD:AAU2329
Chrysis parietis|BC-ZSM-HYM-29774-F07|Germany|Berlin|BOLD:AAU2329
Chrysis parietis|BC-ZSM-HYM-29774-H10|Germany|BOLD:AAU2329
Chrysis parietis|BC ZSM HYM 07998|Germany|Rhineland-Palatinate|BOLD:AAU2329
Chrysis parietis|ON_14623|Germany|Baden-Wuerttemberg|BOLD:AAU2329
Chrysis leptomandibularis|BC-ZSM-HYM-29774-F04|Germany|Berlin|BOLD:ACQ4597
Chrysis leptomandibularis|KY430765.1_tmp|Italy|Lombardy|BOLD:ACQ4597
Chrysis terminata|GBOL 01977|France|Auvergne-Rhones-Alpes|BOLD:ABY5626
Chrysis terminata|BC-ZSM-HYM-29774-H02|Germany|BOLD:ABY5626
Chrysis terminata|BC ZSM HYM 11091|Germany|Thuringia|BOLD:ABY5626
Chrysis terminata|BC-ZSM-HYM-29774-H08|Germany|Saxony|BOLD:ABY5626
Chrysis terminata|KY430760.1_tmp|Germany|Rhineland-Palatinate|BOLD:ABY5626
Chrysis terminata|ON9404|Germany|Baden-Wuerttemberg|BOLD:ABY5626
Chrysis terminata|ON7242|Germany|North Rhine-Westphalia|BOLD:ABY5626
Chrysis terminata|ON5241|Sweden|Kalmar|BOLD:ABY5626
Chrysis terminata|ON7214|Germany|North Rhine-Westphalia|BOLD:ABY5626
Chrysis terminata|BC-ZSM-HYM-29774-F12|Germany|North Rhine-Westphalia|BOLD:ABY5626
Chrysis terminata|BC ZSM HYM 12749|Germany|Thuringia|BOLD:ABY5626
Chrysis terminata|BC ZSM HYM 12738|Germany|Thuringia|BOLD:ABY5626
Chrysis terminata|BC-ZSM-HYM-29774-F02|Germany|Berlin|BOLD:ABY5626
Chrysis terminata|BC-ZSM-HYM-29771-E08|Germany|Baden-Wuerttemberg|BOLD:ABY5626
Chrysis terminata|BC-ZSM-HYM-29774-F11|Germany|Saxony|BOLD:ABY5626
Chrysis terminata|BC-ZSM-HYM-29774-F10|Germany|Berlin|BOLD:ABY5626
Chrysis terminata|BC-ZSM-HYM-29774-G12|Germany|Saxony|BOLD:ABY5626
Chrysis terminata|BC-ZSM-HYM-29771-E04|Germany|Saxony-Anhalt|BOLD:ABY5626
Chrysis terminata|BC ZSM HYM 11092|Germany|Thuringia|BOLD:ABY5626
Chrysis terminata|BC ZSM HYM 12739|Germany|Thuringia|BOLD:ABY5626
Chrysis terminata|BC ZSM HYM 12740|Germany|Thuringia|BOLD:ABY5626
Chrysis terminata|BC ZSM HYM 12741|Germany|Thuringia|BOLD:ABY5626
Chrysis terminata|BC-ZSM-HYM-29771-E07|Germany|Saxony-Anhalt|BOLD:ABY5626
Chrysis terminata|BC-ZSM-HYM-27533-B10|Germany|Bavaria|BOLD:ABY5626
Chrysis terminata|ON7569|Italy|Aosta Valley|BOLD:ABY5626
Chrysis terminata|ON5953|Germany|Hesse|BOLD:ABY5626
Chrysis terminata|BC-ZSM-HYM-29771-H09|Germany|Berlin|BOLD:ABY5626
Chrysis terminata|BC-ZSM-HYM-27533-B12|Germany|Bavaria|BOLD:ABY5626
Chrysis impressa|ON9041|Netherlands|Gelderland|BOLD:AAG0244
Chrysis impressa|ON9033|Netherlands|Gelderland|BOLD:AAG0244
Chrysis impressa|KY430763.1_tmp|Sweden|Kalmar|BOLD:AAG0244
Chrysis impressa|ON8138|Germany|Hesse|BOLD:AAG0244
Chrysis impressa|ON8207|Germany|Hesse|BOLD:AAG0244
Chrysis impressa|BC-ZSM-HYM-29774-H05|Germany|BOLD:AAG0244
Chrysis impressa|BC ZSM HYM 12751|Germany|Thuringia|BOLD:AAG0244
Chrysis impressa|BC ZSM HYM 12743|Germany|Thuringia|BOLD:AAG0244
Chrysis impressa|BC ZSM HYM 07999|Germany|Hesse|BOLD:AAG0244
Chrysis ignita|ON2127|Germany|Baden-Wuerttemberg|BOLD:AAG0244
Chrysis ignita|ON4360|Germany|Rhineland-Palatinate|BOLD:AAG0244
Chrysis ignita|ON0609|Germany|Rhineland-Palatinate|BOLD:AAG0244
Chrysis ignita|KY430761.1_tmp|Germany|Rhineland-Palatinate|BOLD:AAG0244
Chrysis ignita|ON0759|Germany|Rhineland-Palatinate|BOLD:AAG0244
Chrysis ignita|ON0752|Germany|Rhineland-Palatinate|BOLD:AAG0244
Chrysis ignita|ON0613|Germany|Rhineland-Palatinate|BOLD:AAG0244
Chrysis ignita|ON0614|Germany|Rhineland-Palatinate|BOLD:AAG0244
Chrysis ignita|ON0756|Germany|Rhineland-Palatinate|BOLD:AAG0244
Chrysis ignita|ON6146|Germany|Hesse|BOLD:AAG0244
Chrysis ignita|ON6945|Germany|Rhineland-Palatinate|BOLD:AAG0244
Chrysis pseudobrevitarsis|ON4612|Germany|Bavaria|BOLD:ACG6983
Chrysis pseudobrevitarsis|ON4619|Germany|Bavaria|BOLD:ACG6983
Chrysis pseudobrevitarsis|ON7777|Germany|Bavaria|BOLD:ACG6983
Chrysis pseudobrevitarsis|ON9821|Germany|Mecklenburg-Vorpommern|BOLD:ACG6983
Chrysis brevitarsis|KU85491.1|BOLD:ACG7211
Chrysis brevitarsis|JX292241|Sweden|BOLD:ACG7211
Chrysis parabrevitarsis|ON4673|Germany|Hesse|BOLD:ACF7346
Chrysis parabrevitarsis|ON5964|Germany|Rhineland-Palatinate|BOLD:ACG6749
Chrysis parabrevitarsis|ON8235|Germany|Rhineland-Palatinate|BOLD:ACG6749
Chrysis parabrevitarsis|ON7911|Germany|Rhineland-Palatinate|BOLD:ACG6749

Chrysis parabrevitarsis|ON5964|Germany|Rhineland-Palatinate|BOLD:ACG6749
Chrysis parabrevitarsis|ON8235|Germany|Rhineland-Palatinate|BOLD:ACG6749
Chrysis parabrevitarsis|ON7911|Germany|Rhineland-Palatinate|BOLD:ACG6749
Chrysis parabrevitarsis|KY430768.1_tmp|Germany|Rhineland-Palatinate|BOLD:ACG6749
Chrysis parabrevitarsis|ON6006|Germany|Rhineland-Palatinate|BOLD:ACG6749
Chrysis parabrevitarsis|ON4679|Germany|Hesse|BOLD:ACG6749
Chrysis parabrevitarsis|ON4657|Germany|Hesse|BOLD:ACG6749
Chrysis parabrevitarsis|ON4560|Germany|Bavaria|BOLD:ACG6749
Chrysis parabrevitarsis|ON4559|Germany|Bavaria|BOLD:ACG6749
Chrysis parabrevitarsis|ON4445|Germany|Rhineland-Palatinate|BOLD:ACG6749
Chrysis parabrevitarsis|ON4440|Germany|Rhineland-Palatinate|BOLD:ACG6749
Chrysis parabrevitarsis|ON4394|Germany|Hesse|BOLD:ACG6749
Chrysis parabrevitarsis|ON3242|Germany|Rhineland-Palatinate|BOLD:ACG6749
Chrysis parabrevitarsis|ON3197|Germany|Rhineland-Palatinate|BOLD:ACG6749
Chrysis parabrevitarsis|ON3194|Germany|Rhineland-Palatinate|BOLD:ACG6749
Chrysis parabrevitarsis|ON3143|Germany|Rhineland-Palatinate|BOLD:ACG6749
Chrysis parabrevitarsis|ON6955|Germany|Hesse|BOLD:ACG6749
Chrysis parabrevitarsis|ON6711|Germany|Rhineland-Palatinate|BOLD:ACG6749
Chrysis parabrevitarsis|ON5349|Germany|Hesse|BOLD:ACG6749
Chrysis parabrevitarsis|ON4557|Germany|Bavaria|BOLD:ACG6749
Chrysis parabrevitarsis|ON4411|Germany|Hesse|BOLD:ACG6749
Chrysis parabrevitarsis|BC ZSM HYM 12742|Germany|Thuringia|BOLD:ACG6749
Chrysis parabrevitarsis|BC ZSM HYM 12748|Germany|Thuringia|BOLD:ACG6749
Chrysis parabrevitarsis|ON4369|Germany|Rhineland-Palatinate|BOLD:ACG6749
Chrysis parabrevitarsis|ON4668|Germany|Hesse|BOLD:ACG6749
Chrysis parabrevitarsis|BC ZSM HYM 12745|Germany|Thuringia|BOLD:ACG6749
Chrysis sculpturata|ON1269|France|Provence-Alpes-Cote d'Azur|BOLD:ABU6373
Chrysis horridula|BC ZSM HYM 15251|Germany|Brandenburg|BOLD:AAU2328
Chrysis horridula|BC ZSM HYM 12747|Germany|Thuringia|BOLD:AAU2328
Chrysis horridula|ON1257|France|Provence-Alpes-Cote d'Azur|BOLD:AAU2328
Chrysis horridula|BC-ZSM-HYM-29774-F06|Germany|Berlin|BOLD:AAU2328
Chrysis horridula|BC-ZSM-HYM-29774-F09|Germany|Saxony|BOLD:AAU2328
Chrysis horridula|BC-ZSM-HYM-29771-E06|Germany|Saxony-Anhalt|BOLD:AAU2328
Chrysis horridula|BC-ZSM-HYM-29774-G09|Germany||BOLD:AAU2328
Chrysis horridula|BC-ZSM-HYM-29774-F08|Germany|Saxony|BOLD:AAU2328
Chrysis horridula|BC-ZSM-HYM-29774-G08|Germany||BOLD:AAU2328
Chrysis horridula|BC-ZSM-HYM-29771-E01|Germany|Saxony-Anhalt|BOLD:AAU2328
Chrysis horridula|BC ZSM HYM 12746|Germany|Thuringia|BOLD:AAU2328
Chrysis horridula|BC ZSM HYM 19913|Germany|Saxony-Anhalt|BOLD:AAU2328
Chrysis immaculata|KY430762.1_tmp|Germany|North Rhine-Westphalia|BOLD:AEC7328
Chrysis corusca|ON9734|Germany|Baden-Wuerttemberg|BOLD:ACF7605
Chrysis corusca|ON9710|Germany|Baden-Wuerttemberg|BOLD:ACF7605
Chrysis corusca|ON9735|Germany|Baden-Wuerttemberg|BOLD:ACF7605
Chrysis corusca|ON11421|Germany|Baden-Wuerttemberg|BOLD:ACF7605
Chrysis corusca|ON10534|Germany|Baden-Wuerttemberg|BOLD:ACF7605
Chrysis corusca|BC-ZSM-HYM-29771-D12|Germany|Hamburg|BOLD:ACF7605
Chrysis corusca|ON5232|Sweden|Kalmar|BOLD:ACF7605
Chrysis corusca|ON11480|Germany|Baden-Wuerttemberg|BOLD:ACF7605
Chrysis corusca|ON10547|Germany|Baden-Wuerttemberg|BOLD:ACF7605
Chrysis corusca|ON11084|Germany|Baden-Wuerttemberg|BOLD:ACF7605
Chrysis corusca|ON11206|Germany|Baden-Wuerttemberg|BOLD:ACF7605
Chrysis corusca|ON9793|Germany|Baden-Wuerttemberg|BOLD:ACF7605
Chrysis corusca|ON9792|Germany|Baden-Wuerttemberg|BOLD:ACF7605
Chrysis corusca|ON9786|Germany|Baden-Wuerttemberg|BOLD:ACF7605
Chrysis corusca|ON10493|Germany|Baden-Wuerttemberg|BOLD:ACF7605
Chrysis corusca|ON10497|Germany|Baden-Wuerttemberg|BOLD:ACF7605
Chrysis corusca|ON9785|Germany|Baden-Wuerttemberg|BOLD:ACF7605
Chrysis corusca|ON10538|Germany|Baden-Wuerttemberg|BOLD:ACF7605
Chrysis corusca|ON11111|Germany|Baden-Wuerttemberg|BOLD:ACF7605
Chrysis corusca|ON11075|Germany|Baden-Wuerttemberg|BOLD:ACF7605
Chrysis corusca|ON11466|Germany|Baden-Wuerttemberg|BOLD:ACF7605
Chrysis corusca|ON11477|Germany|Baden-Wuerttemberg|BOLD:ACF7605
Chrysis corusca|ON11506|Germany|Baden-Wuerttemberg|BOLD:ACF7605
Chrysis corusca|ON11508|Germany|Baden-Wuerttemberg|BOLD:ACF7605
Chrysis corusca|ON11518|Germany|Baden-Wuerttemberg|BOLD:ACF7605
Chrysis corusca|ON11532|Germany|Baden-Wuerttemberg|BOLD:ACF7605
Chrysis corusca|ON11204|Germany|Baden-Wuerttemberg|BOLD:ACF7605
Chrysis corusca|ON11205|Germany|Baden-Wuerttemberg|BOLD:ACF7605
Chrysis corusca|ON11194|Germany|Baden-Wuerttemberg|BOLD:ACF7605
Chrysis corusca|ON11202|Germany|Baden-Wuerttemberg|BOLD:ACF7605
Chrysis corusca|KY430769.1_tmp|Germany|Hesse|BOLD:ACF7605
Chrysis corusca|ON11198|Germany|Baden-Wuerttemberg|BOLD:ACF7605
Chrysis corusca|ON11192|Germany|Baden-Wuerttemberg|BOLD:ACF7605
Chrysis corusca|ON11114|Germany|Baden-Wuerttemberg|BOLD:ACF7605
Chrysis corusca|ON11188|Germany|Baden-Wuerttemberg|BOLD:ACF7605
Chrysis corusca|ON9736|Germany|Baden-Wuerttemberg|BOLD:ACF7605
Chrysis corusca|ON9739|Germany|Baden-Wuerttemberg|BOLD:ACF7605
Chrysis corusca|ON9720|Germany|Baden-Wuerttemberg|BOLD:ACF7605
Chrysis corusca|ON9781|Germany|Baden-Wuerttemberg|BOLD:ACF7605
Chrysis corusca|ON9733|Germany|Baden-Wuerttemberg|BOLD:ACF7605
Chrysis corusca|ON9731|Germany|Baden-Wuerttemberg|BOLD:ACF7605
Chrysis corusca|ON9740|Germany|Baden-Wuerttemberg|BOLD:ACF7605
Chrysis corusca|ON9724|Germany|Baden-Wuerttemberg|BOLD:ACF7605
Chrysis corusca|ON9779|Germany|Baden-Wuerttemberg|BOLD:ACF7605
Chrysis corusca|ON11199|Germany|Baden-Wuerttemberg|BOLD:ACF7605
Chrysis corusca|ON11210|Germany|Baden-Wuerttemberg|BOLD:ACF7605
Chrysis corusca|ON1700|Germany|Rhineland-Palatinate|BOLD:ACF7605
Chrysis corusca|BC-ZSM-HYM-29774-G01|Germany|North Rhine-Westphalia|BOLD:ACF7605
Chrysis corusca|BC-ZSM-HYM-29774-G02|Germany|North Rhine-Westphalia|BOLD:ACF7605
Chrysis corusca|ON9721|Germany|Baden-Wuerttemberg|BOLD:ACF7605
Chrysis corusca|ON11203|Germany|Baden-Wuerttemberg|BOLD:ACF7605
Chrysis corusca|ON9778|Germany|Baden-Wuerttemberg|BOLD:ACF7605

Chrysis corusca|ON9721|Germany|Baden-Wuerttemberg|BOLD:ACF7003
Chrysis corusca|ON11203|Germany|Baden-Wuerttemberg|BOLD:ACF7605
Chrysis corusca|ON9778|Germany|Baden-Wuerttemberg|BOLD:ACF7605
Chrysis corusca|BC-ZSM-HYM-27533-B09|Germany|Bavaria|BOLD:ACF7605
Chrysis vanlithi|KJ398929|||BOLD:ACJ4881
Chrysis subcoriacea|BC-ZSM-HYM-29774-H04|Germany||BOLD:ACF9031
Chrysis subcoriacea|BC ZSM HYM 12744|Germany||BOLD:ACF9031
Chrysis subcoriacea|BC ZSM HYM 17477|Italy|Aosta Valley|BOLD:ACF9031
Chrysis longula|BC-ZSM-HYM-29774-E06|Germany|Saxony|BOLD:ACF9032
Chrysis longula|ON3133|Germany|Rhineland-Palatinate|BOLD:ACF9032
Chrysis longula|ON4555|Germany|Bavaria|BOLD:ACF9032
Chrysis longula|ON6823|Germany|Rhineland-Palatinate|BOLD:ACF9032
Chrysis longula|BC-ZSM-HYM-29774-E05|Germany|Berlin|BOLD:ACF9032
Chrysis longula|BC-ZSM-HYM-29774-E08|Germany|Berlin|BOLD:ACF9032
Chrysis longula|ON4366|Germany|Rhineland-Palatinate|BOLD:ACF9032
Chrysis longula|ON4561|Germany|Bavaria|BOLD:ACF9032
Chrysis longula|ON6817|Germany|Rhineland-Palatinate|BOLD:ACF9032
Chrysis longula|ON6818|Germany|Rhineland-Palatinate|BOLD:ACF9032
Chrysis longula|ON6819|Germany|Rhineland-Palatinate|BOLD:ACF9032
Chrysis longula|ON6820|Germany|Rhineland-Palatinate|BOLD:ACF9032
Chrysis longula|ON6824|Germany|Rhineland-Palatinate|BOLD:ACF9032
Chrysis longula|ON6825|Germany|Rhineland-Palatinate|BOLD:ACF9032
Chrysis longula|ON6827|Germany|Rhineland-Palatinate|BOLD:ACF9032
Chrysis longula|ON6951|Germany|Rhineland-Palatinate|BOLD:ACF9032
Chrysis longula|ON3025|Germany|Rhineland-Palatinate|BOLD:ACF9032
Chrysis longula|ON4364|Germany|Rhineland-Palatinate|BOLD:ACF9032
Chrysis longula|KY430770.1_tmp|Germany|Hesse|BOLD:ACF9032
Chrysis longula|ON6828|Germany|Rhineland-Palatinate|BOLD:ACF9032
Chrysis longula|BC-ZSM-HYM-29774-E07|Germany|Saxony|BOLD:ACF9032
Chrysis longula|ON3020|Germany|Rhineland-Palatinate|BOLD:ACF9032
Chrysis longula|ON5512|Germany|Bavaria|BOLD:ACF9032
Chrysis longula|BC-ZSM-HYM-29774-G11|Germany|Berlin|BOLD:ACF9032
Chrysis longula|BC ZSM HYM 12750|Germany|Thuringia|BOLD:ACF9032
Chrysis angustula|BC-ZSM-HYM-29774-D07|Germany||BOLD:AAV7326
Chrysis angustula|ON1564|Germany|Rhineland-Palatinate|BOLD:AAV7326
Chrysis angustula|ON9727|Germany|Baden-Wuerttemberg|BOLD:AAV7326
Chrysis angustula|ON11504|Germany|Baden-Wuerttemberg|BOLD:AAV7326
Chrysis angustula|BC-ZSM-HYM-29774-D08|Germany||BOLD:AAV7326
Chrysis angustula|KY430771.1_tmp|Germany|Rhineland-Palatinate|BOLD:AAV7326
Chrysis angustula|ON9729|Germany|Baden-Wuerttemberg|BOLD:AAV7326
Chrysis angustula|ON9728|Germany|Baden-Wuerttemberg|BOLD:AAV7326
Chrysis angustula|BC-ZSM-HYM-29774-E03|Germany||BOLD:AAV7326
Chrysis angustula|BC-ZSM-HYM-29774-E04|Germany||BOLD:AAV7326
Chrysis angustula|BC ZSM HYM 19914|Germany|Mecklenburg-Vorpommern|BOLD:AAV7326
Chrysis angustula|BC-ZSM-HYM-29774-H03|Germany||BOLD:AAV7326
Chrysis angustula|BC-ZSM-HYM-29771-E09|Germany|Hamburg|BOLD:AAV7326
Chrysis angustula|BC-ZSM-HYM-29771-E10|Germany|Hamburg|BOLD:AAV7326
Chrysis angustula|BC-ZSM-HYM-29771-E05|Germany|Hamburg|BOLD:AAV7326
Chrysis angustula|BC-ZSM-HYM-29774-G06|Germany|Berlin|BOLD:AAV7326
Chrysis angustula|BC ZSM HYM 17475|Germany|Bavaria|BOLD:AAV7326
Chrysis angustula|BC ZSM HYM 19915|Italy|South Tyrol|BOLD:AAV7326
Chrysis clarinicolis|BC-ZSM-HYM-29774-F05|Germany|Saxony|BOLD:ACQ7862
Chrysis clarinicolis|ON_14625|Germany|Baden-Wuerttemberg|BOLD:ACQ7862
Chrysis clarinicolis|ON_14626|Germany|Baden-Wuerttemberg|BOLD:ACQ7862
Chrysis indigotea|KY430778.1_tmp|Germany|Rhineland-Palatinate|BOLD:AAP1364
Chrysis indigotea|BC ZSM HYM 06298|Germany|Bavaria|BOLD:AAP1364
Chrysis indigotea|BC ZSM HYM 06299|Germany|Bavaria|BOLD:AAP1364
Chrysis rutiliventris|BC ZSM HYM 07345|Italy|Lombardy|BOLD:AAV6931
Chrysis rutiliventris|KY430772.1_tmp|France|Provence-Alpes-Cote d'Azur|BOLD:AAV6931
Chrysis rutiliventris|BC ZSM HYM 07344|Italy|Aosta Valley|BOLD:AAV6931
Chrysis rutiliventris|BC ZSM HYM 07797|France|Provence-Alpes-Cote d'Azur|BOLD:AAV6931
Chrysis ruddii|BC ZSM HYM 07798|France|Provence-Alpes-Cote d'Azur|BOLD:AAV6944
Chrysis ruddii|KY430773.1_tmp|Germany|Baden-Wuerttemberg|BOLD:AAV6944
Chrysis ruddii|BC ZSM HYM 07877|Germany|Rhineland-Palatinate|BOLD:AAV6944
Chrysis ruddii|BC ZSM HYM 07875|Germany|Rhineland-Palatinate|BOLD:AAV6944
Chrysis ruddii|BC ZSM HYM 07876|Germany|Rhineland-Palatinate|BOLD:AAV6944
Chrysis ruddii|BC ZSM HYM 07874|Germany|Rhineland-Palatinate|BOLD:AAV6944
Chrysis ruddii|BC ZSM HYM 12159|Germany|Saxony-Anhalt|BOLD:AAV6944
Chrysis iris|KJ398877|||BOLD:ABU6374
Chrysis iris|KJ398876|||BOLD:ABU6374
Chrysis iris|KY430775.1_tmp|Germany|Bavaria|BOLD:ABU6374
Chrysis scutellaris|BC ZSM HYM 07337|Italy|Piedmont|BOLD:AAR9833
Chrysis scutellaris|BC ZSM HYM 07338|Italy|Piedmont|BOLD:AAR9833
Chrysis scutellaris|BC ZSM HYM 11087|Germany|Baden-Wuerttemberg|BOLD:AAR9833
Chrysis scutellaris|BC ZSM HYM 11088|Germany|Baden-Wuerttemberg|BOLD:AAR9833
Chrysis scutellaris|KY430717.1_tmp|Germany|Rhineland-Palatinate|BOLD:AAR9833
Chrysis scutellaris|BC ZSM HYM 07868|Germany|Rhineland-Palatinate|BOLD:AAR9833
Chrysis scutellaris|BC ZSM HYM 07866|Germany|Rhineland-Palatinate|BOLD:AAR9833
Chrysis scutellaris|BC ZSM HYM 07869|Germany|Rhineland-Palatinate|BOLD:AAR9833
Chrysis scutellaris|BC ZSM HYM 17351|Italy|Aosta Valley|BOLD:AAR9833
Chrysis scutellaris|BC ZSM HYM 17354|Italy|Aosta Valley|BOLD:AAR9833
Chrysis scutellaris|BC ZSM HYM 06307|Italy|Lombardy|BOLD:AAR9833
Chrysis fulgida|KY430774.1_tmp|Germany|Hesse|BOLD:AAP1068
Chrysis fulgida|BC ZSM HYM 06293|Germany|Bavaria|BOLD:AAP1068
Chrysis fulgida|BC ZSM HYM 06292|Germany|Bavaria|BOLD:AAP1068
Chrysis fulgida|BC ZSM HYM 17346|Germany|Baden-Wuerttemberg|BOLD:AAP1068
Chrysis fulgida|BC ZSM HYM 06294|Germany|Bavaria|BOLD:AAP1068
Chrysis fulgida|BC ZSM HYM 06295|Germany|Bavaria|BOLD:AAP1068
Chrysis fulgida|BC ZSM HYM 14958|Germany|Berlin|BOLD:AAP1068
Chrysis pulchella|KY430796.1_tmp|Spain|Andalusia|BOLD:AED0619
Spintharina versicolor|KY430789.1_tmp|Italy|Emilia-Romagna|BOLD:AAJ3630
Spintharina versicolor|BC ZSM HYM 07342|Italy|Piedmont|BOLD:AAJ3630
Spintharina versicolor|BC ZSM HYM 07343|Italy|Piedmont|BOLD:AAJ3630

